

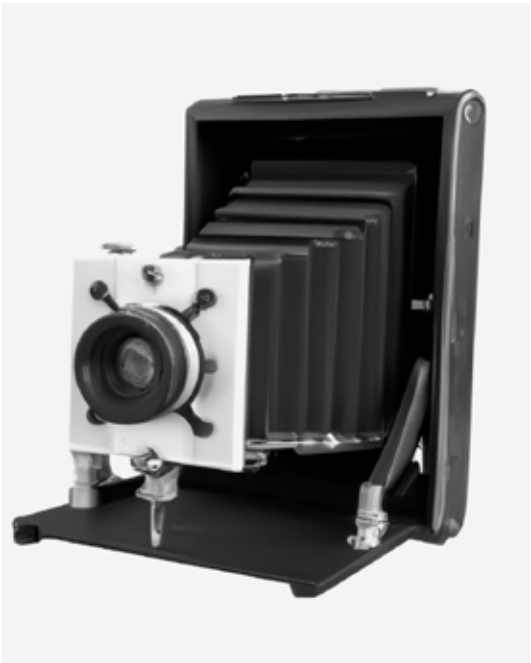
2023

Variation on a realistic 3D of
a Large Format Camera N.4

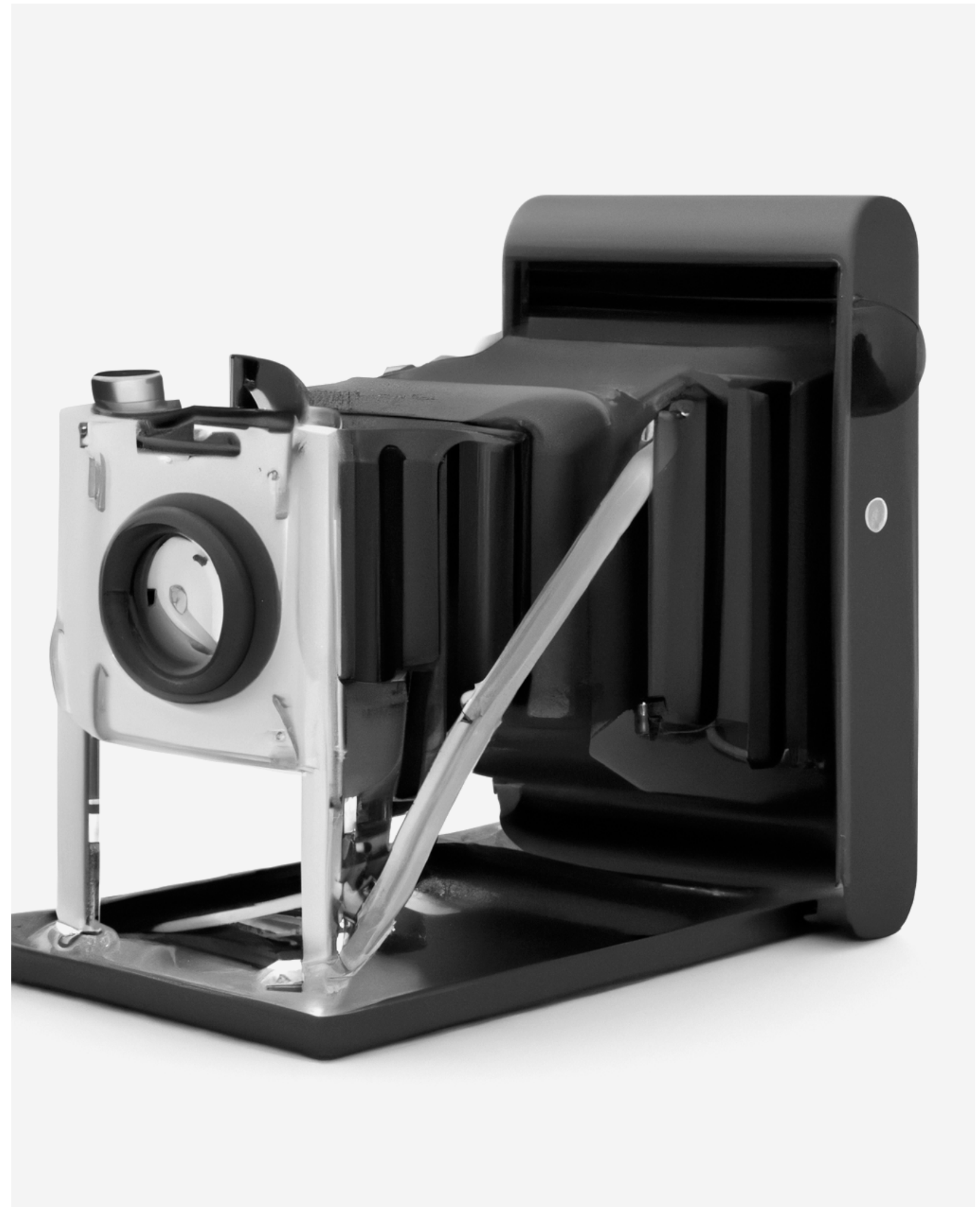
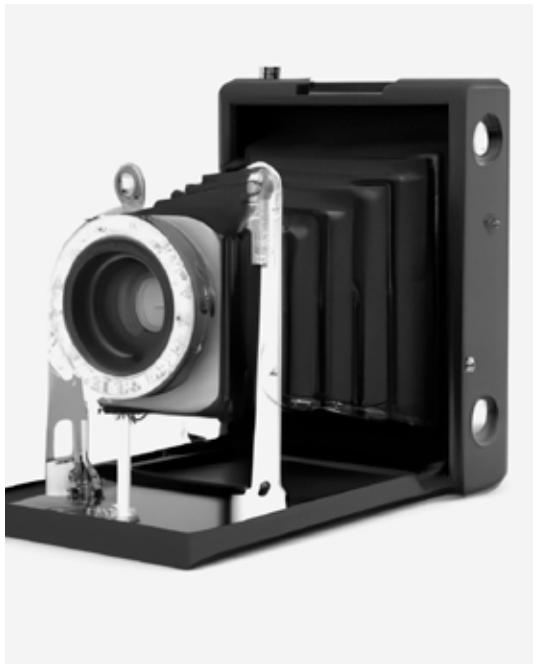
Fabio Barile

The following images are an attempt to use DALL-E as an evolutionary tool, after generating the first four images with the prompt “A realistic 3D of a Large format camera” I choose one of the image for its characteristic and then used that image to generate four variation of it, step by step, the images produced drift from the original prompt to generate something completely different, this process resemble that of evolution that can create an enormous amount of complexity and diversity through time. Every spread of the pdf shows the four images produced and the larger one is the one that generates the following.











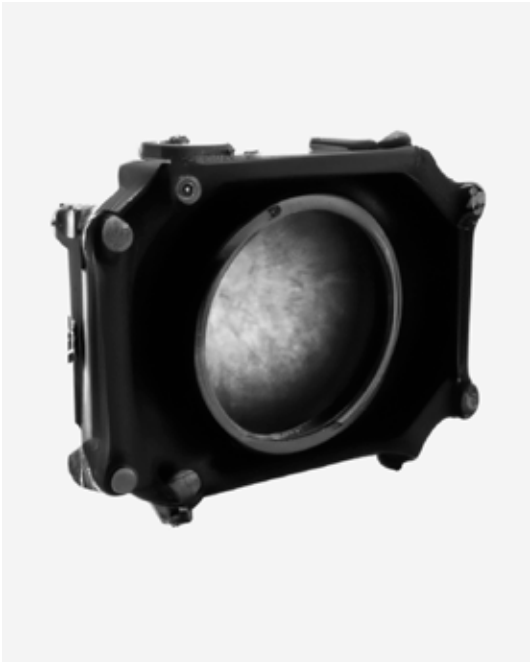




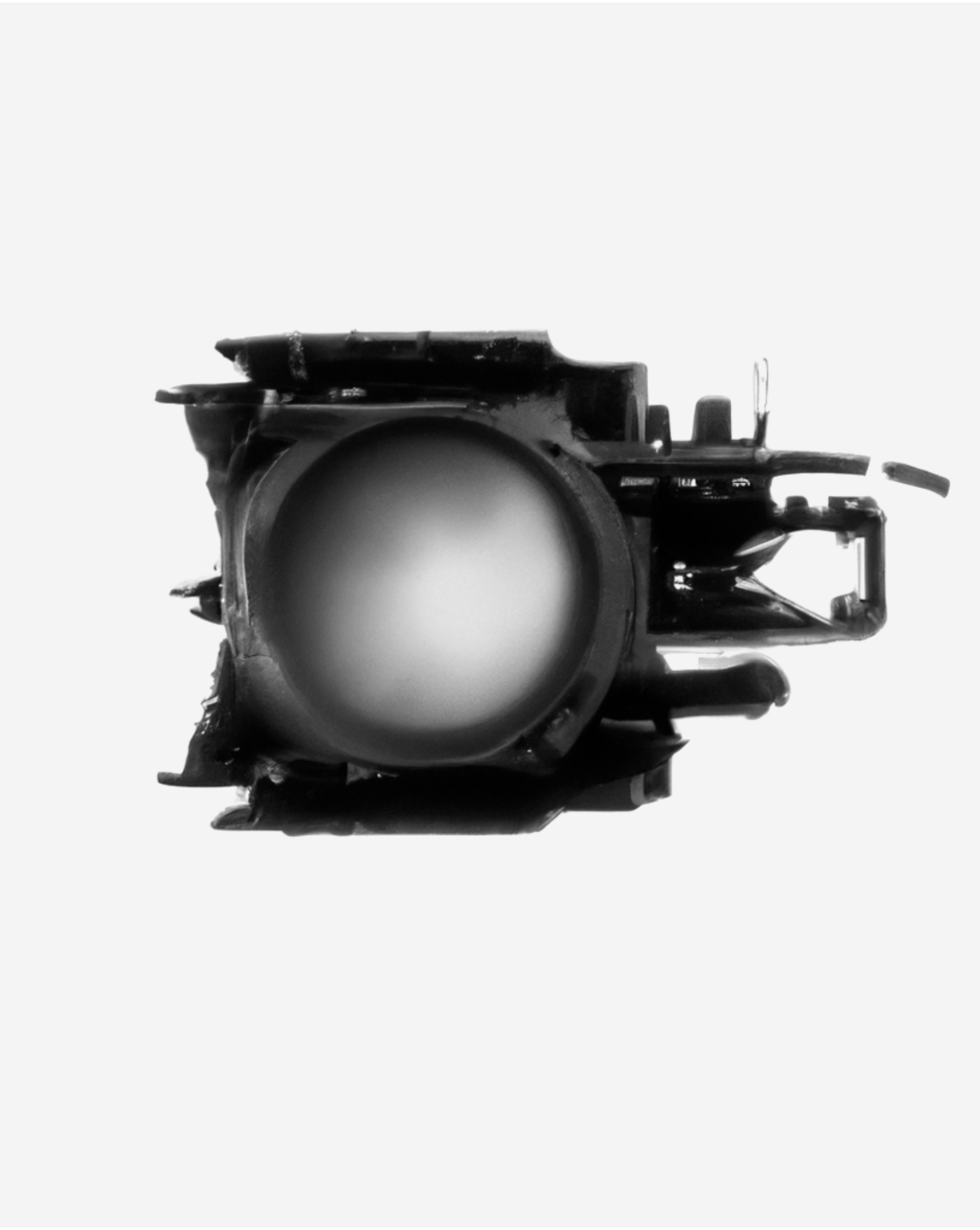


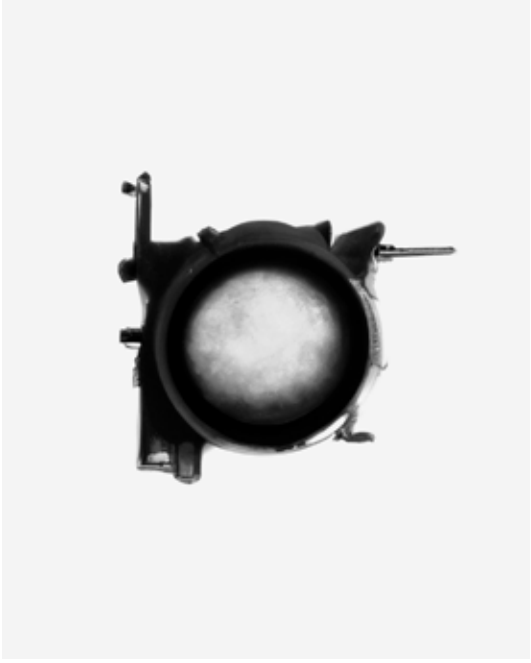






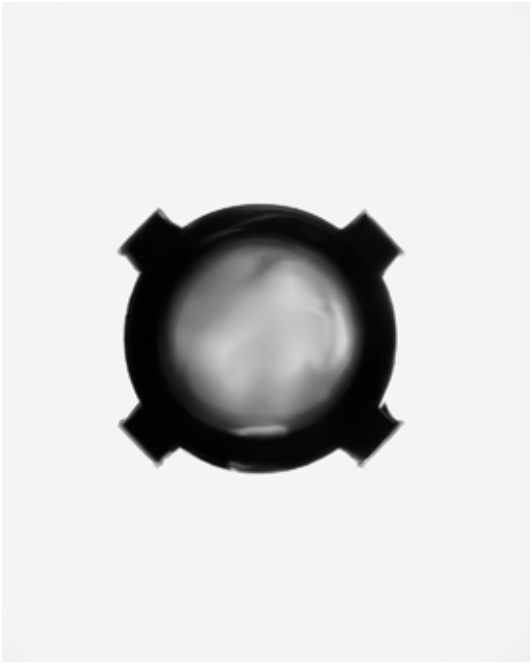


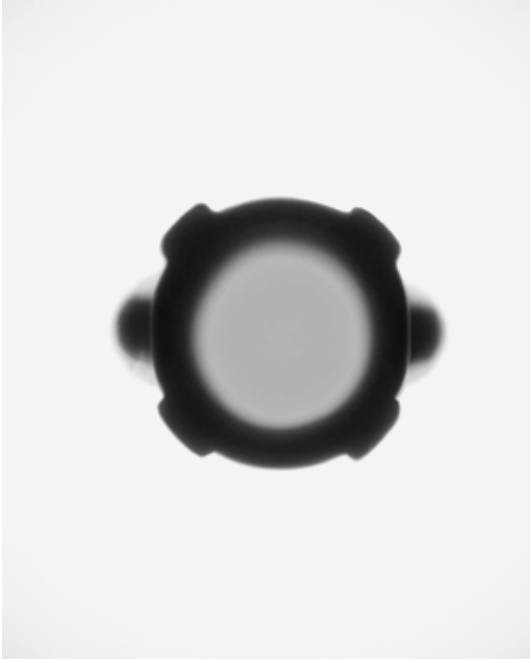
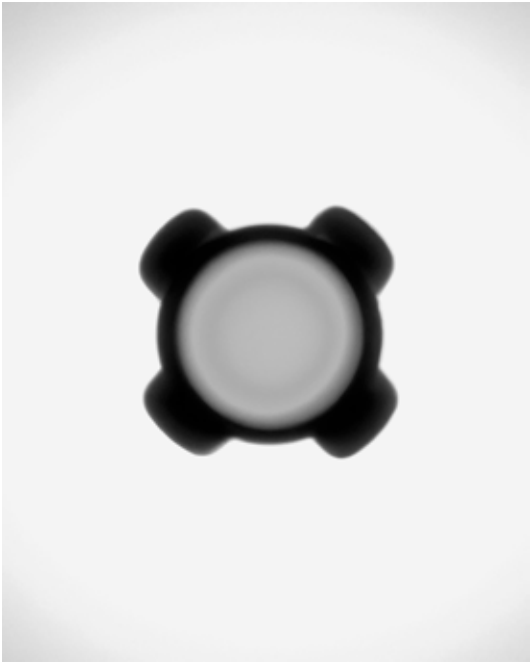


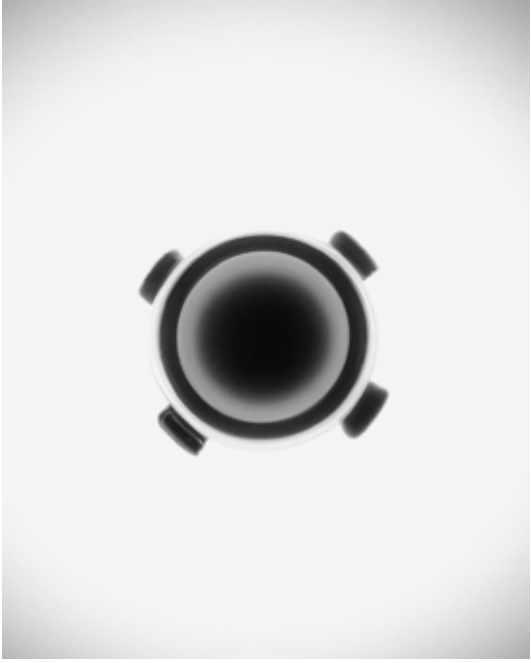


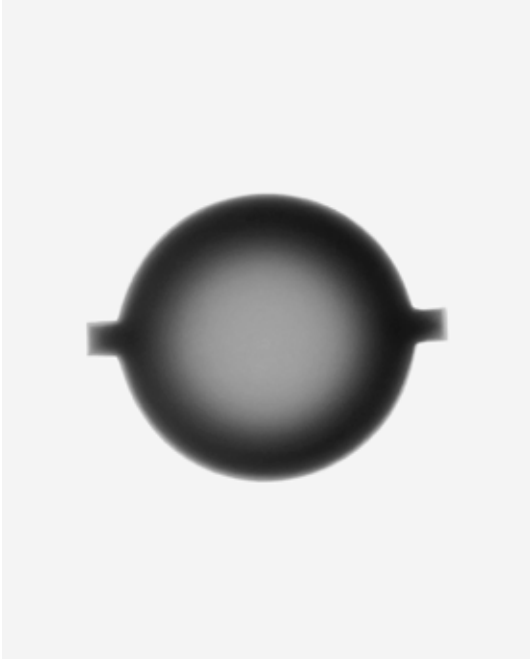
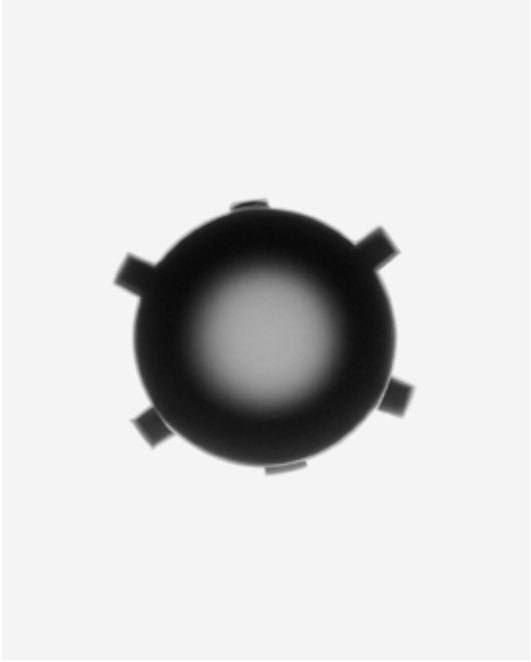
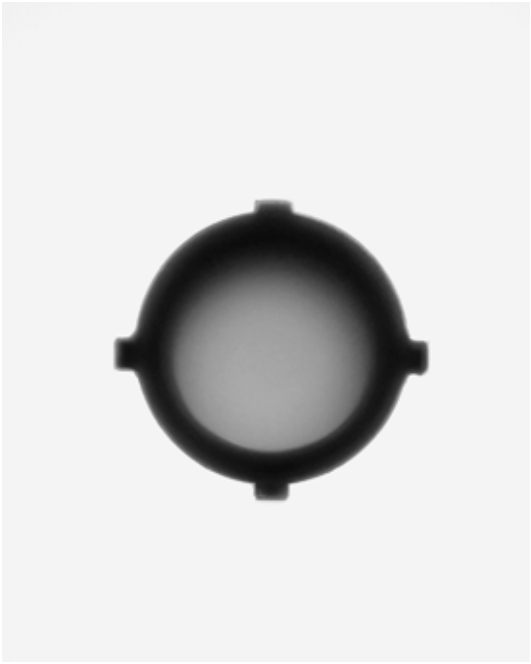


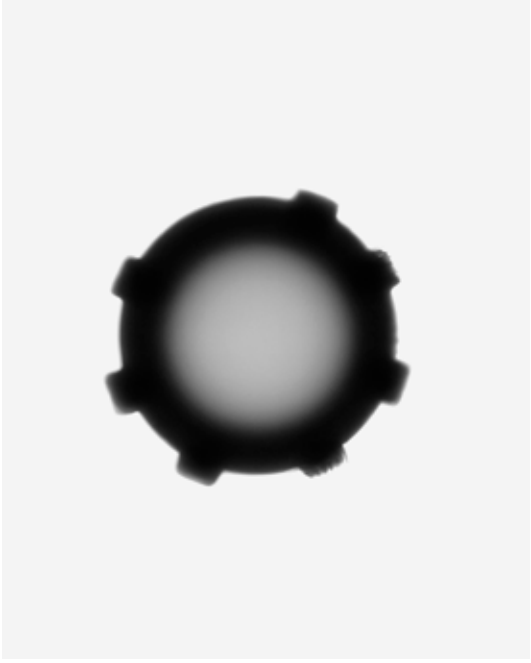
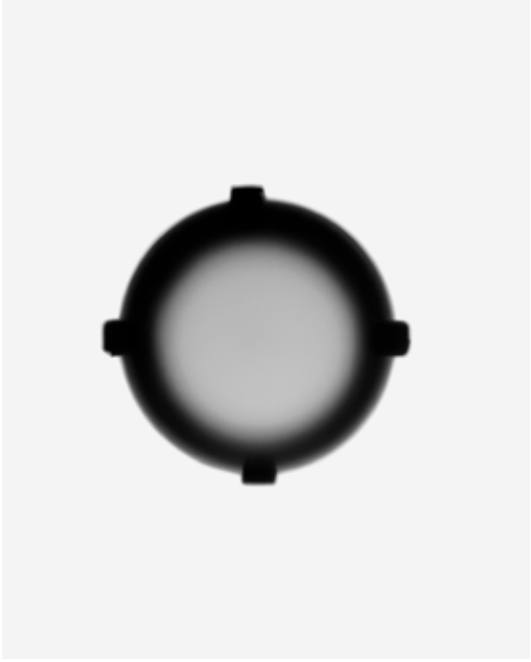
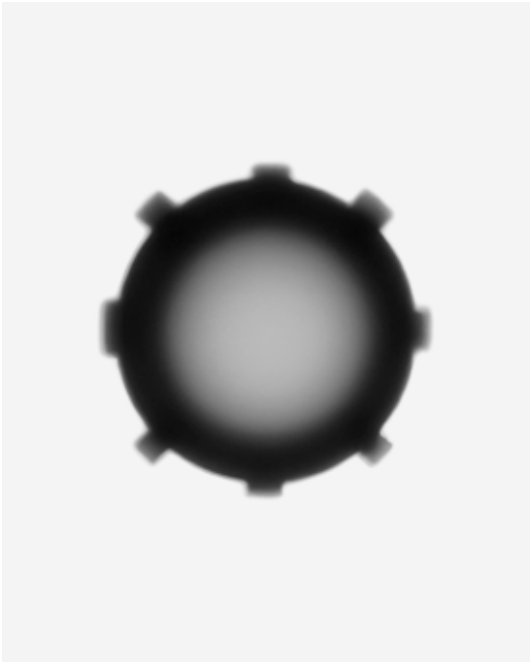


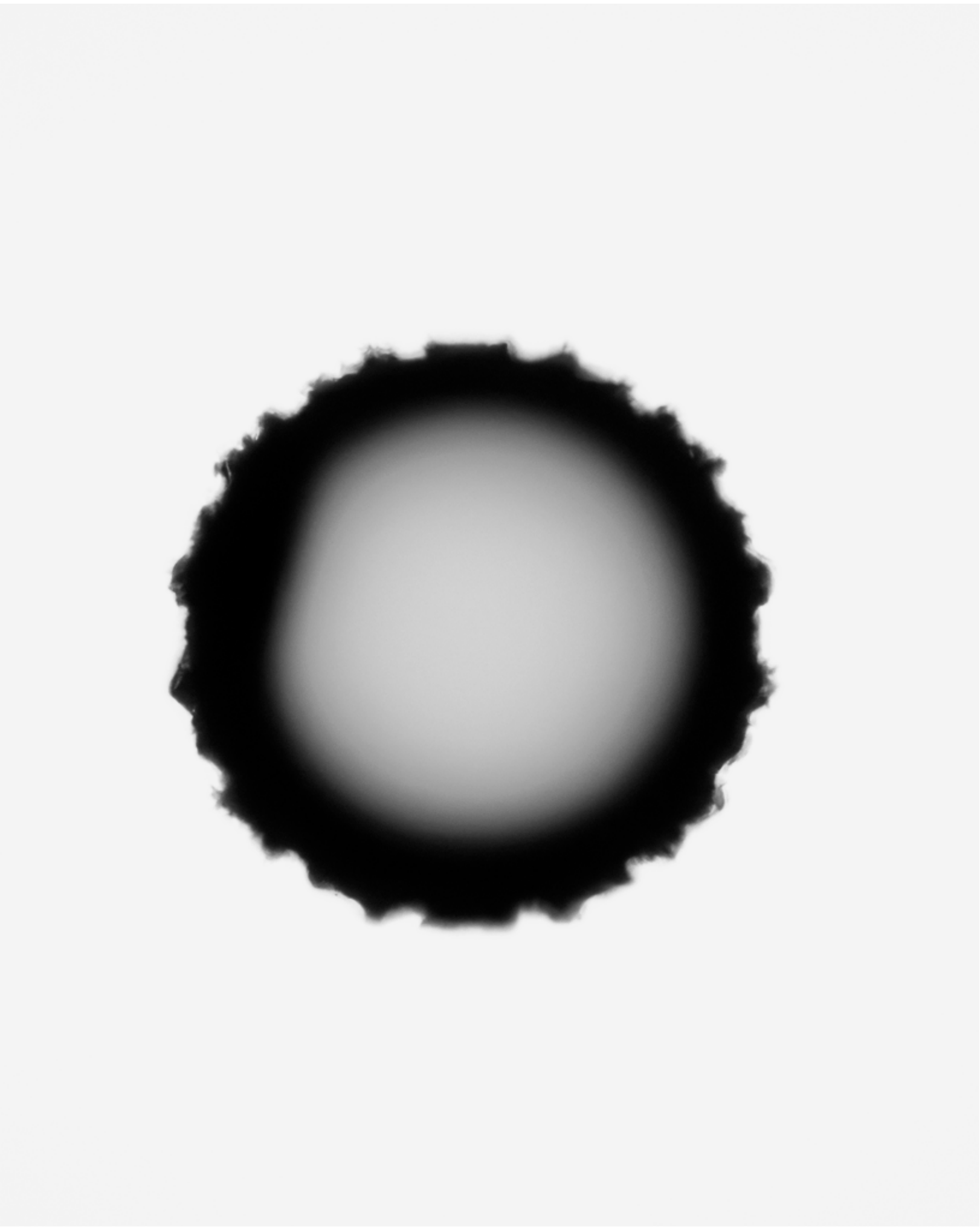
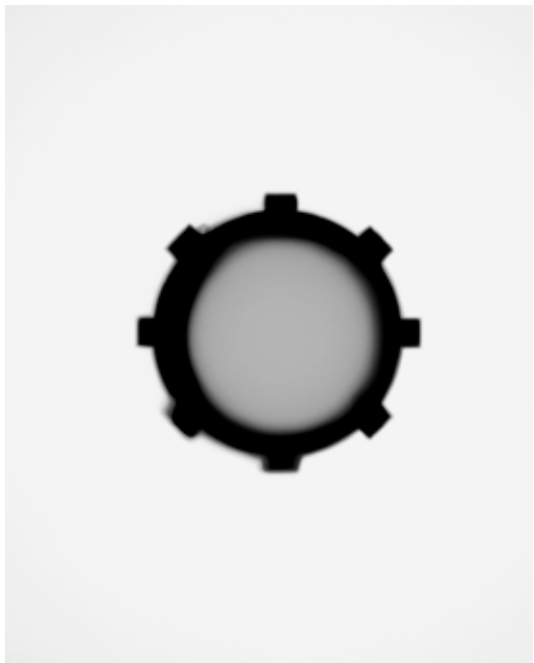


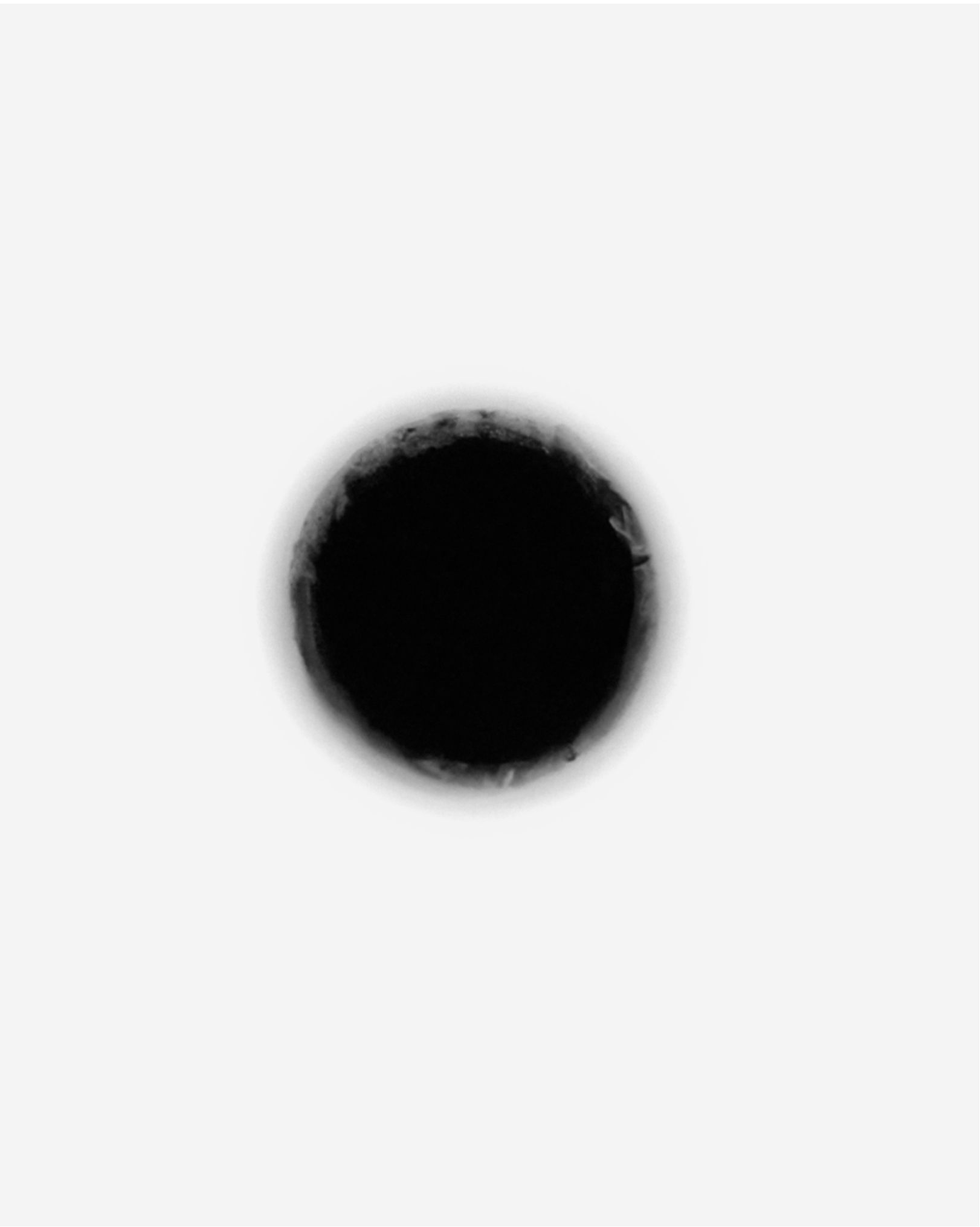
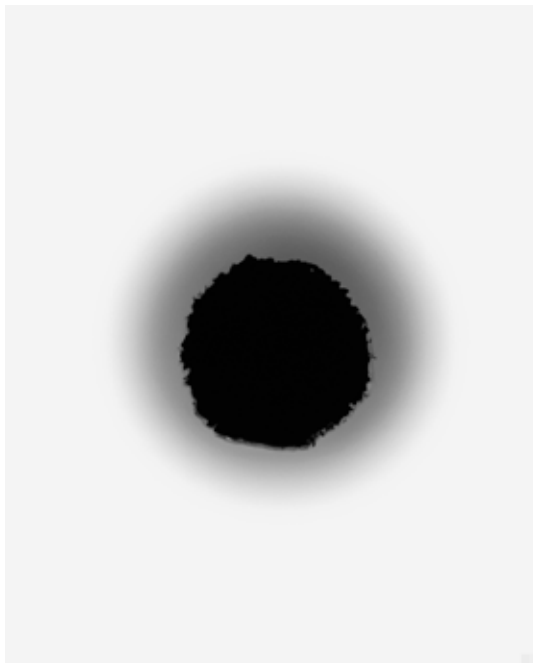
















Fabio Barile
www.fabiobarile.com
info@fabiobarile.com

Graduating from FSM in Florence with a degree in photography in 2007. He started his photographic research in 2005 with a project about coastal erosion, which affects 1500 km of Italian costline. The resulting project, “Among” aimed to investigate natural processes of the landscape. Over the last few years Barile’s work has been driven by an interest in science in relation to art - both conceived as tools for a better understanding of reality. His long-term project, “An Investigation of the Laws Observable in the Composition, Dissolution and Restoration of Land,” examines the manner in which geomorphology acts upon the land, serving as testimony to the vastness of geological time. The work employs photography to stimulate a deeper understanding of the landscape and our connection with the natural environment.

“At first glance, Fabio Barile’s practice could be said to follow in the long tradition of Italian landscape photography which includes practitioners such as Luigi Ghirri, Guido Guidi. On closer inspection, however, the images in An Investigation hew to a tight conceptual framework that belie their simplicity, asking deeper questions about the nature of Time, and geologic time questions whose philosophical implications underpin scientific endeavor, human perception, and the unknowable forces of creative destruction at work in Nature”
L. I.Naomi Itami

Selected exhibitions

2023
Tre-di-ci ,Sguardi sui musei di Lombardia (Group exhibition)
Palazzo Reale, Milano, Italy

2022
Fabio Barile & Domingo Milella — Le Forme del Tempo
Terme di Diocleziano, Museo Nazionale Romano, Rome, Italy
Regeneration (Group exhibition)
American Academy in Rome, Italy
Di Roccia, fuochi e avventure sotterranee (Group exhibition)
MAXXI, L'Aquila, Italy

2021
Di Roccia, fuochi e avventure sotterranee (Group exhibition)
MAXXI, Rome, Italy
Works for a Cosmic Feeling
Matèria, Rome, Italy 2020
Group exhibition, On Earth - Imaging, technology and the natural world
FOAM Museum, Amsterdam.

2019
Group exhibition, On Earth - Imaging, technology and the natural world
50th edition of the Rencontres d'Arles, in collaboration with FOAM Museum.
Fabio Barile & Domingo Milella - The shape of time
Centro Arti visive Pescheria, Pesaro, Italy

2018
Osservare la terra — a dialogue between contemporary photography and the historical archive of ICCD about photography as a tool for observation
ICCD — Istituto Centrale per il Catalogo e la Documentazione, Rome, curated by Benedetta Cestelli Guidi

2017
An Investigation of the laws observable in the composition, dissolution and restoration of land,
Matèria, Rome

2015
Homage to James Hutton
Matèria, Rome, Italy